

# KEEP THE WATER FLOWING

## Post-Construction Support for Rural Water Service Providers

UNC Water and Health Conference  
October 29, 2015



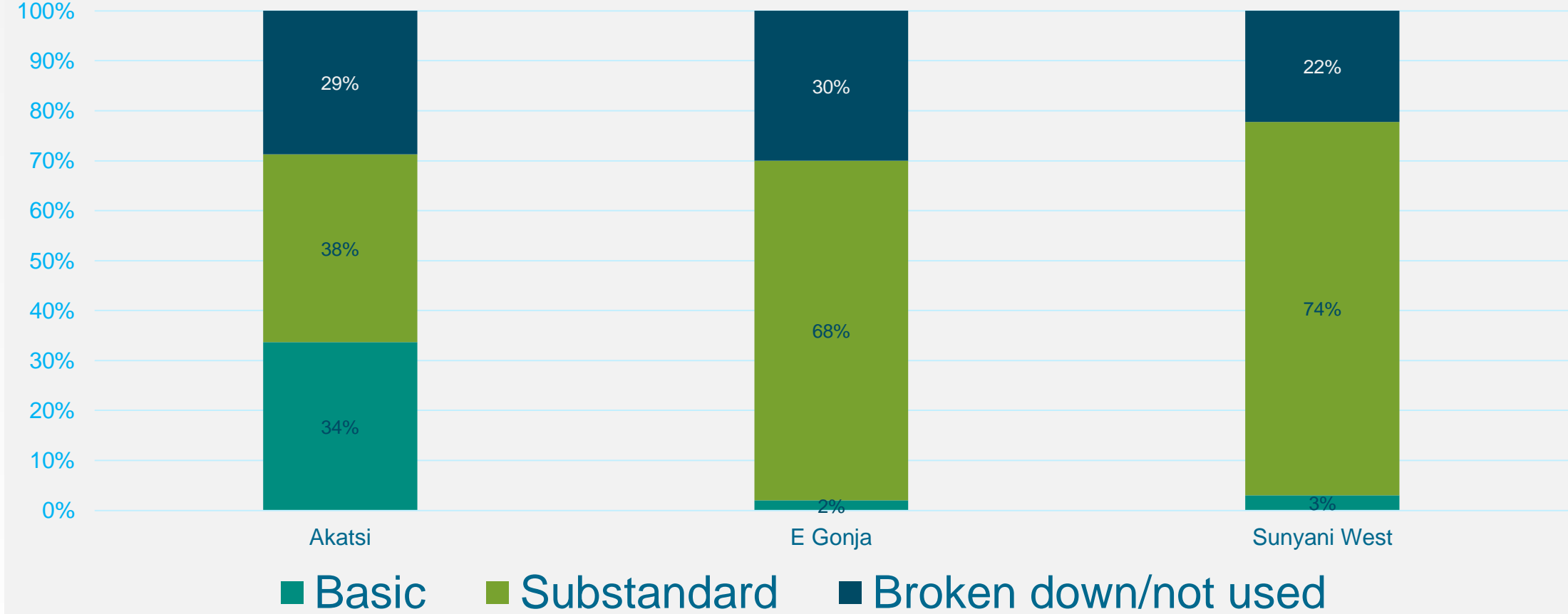
IMPROVE  
INTERNATIONAL

# INTRODUCTIONS



# BEYOND FUNCTIONALITY

## Water service levels - Ghana



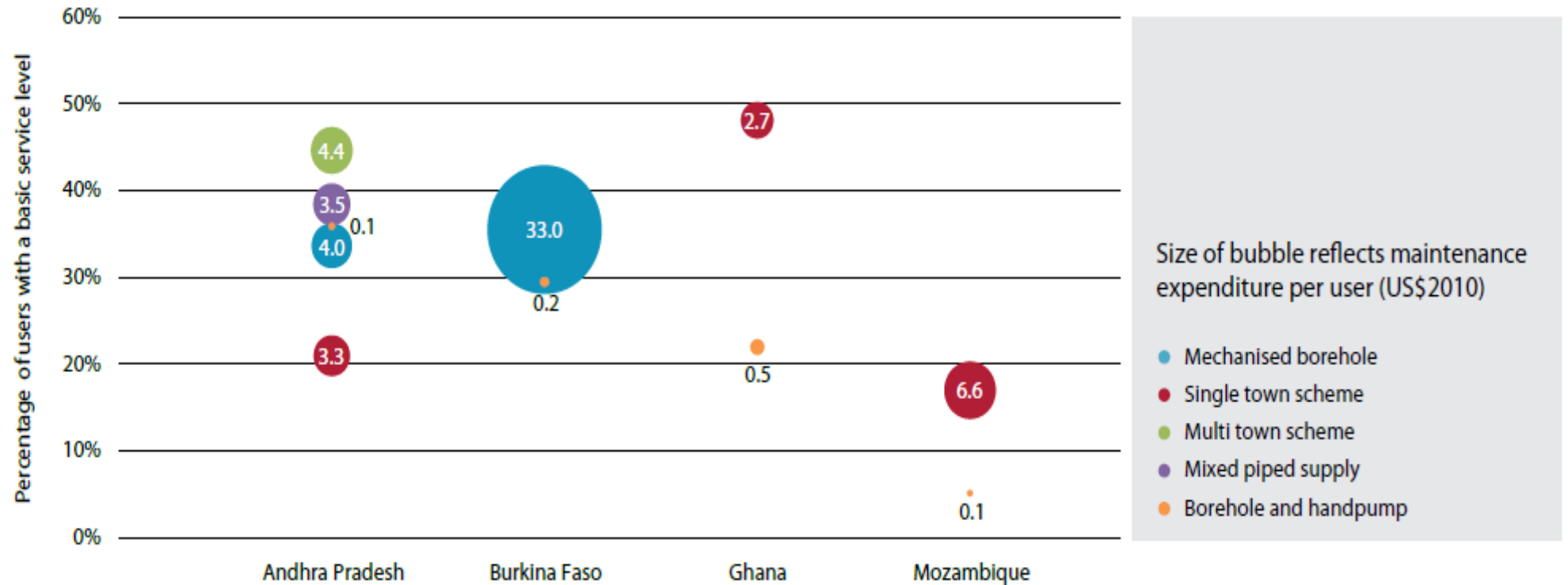
# BEYOND THE PROJECT

- Circuit riders
- Area mechanics
- Supply chains for spare parts
- Monitoring & water quality testing
- Professionalization of community water committees
- Associations of community water committees
- Smart pumps

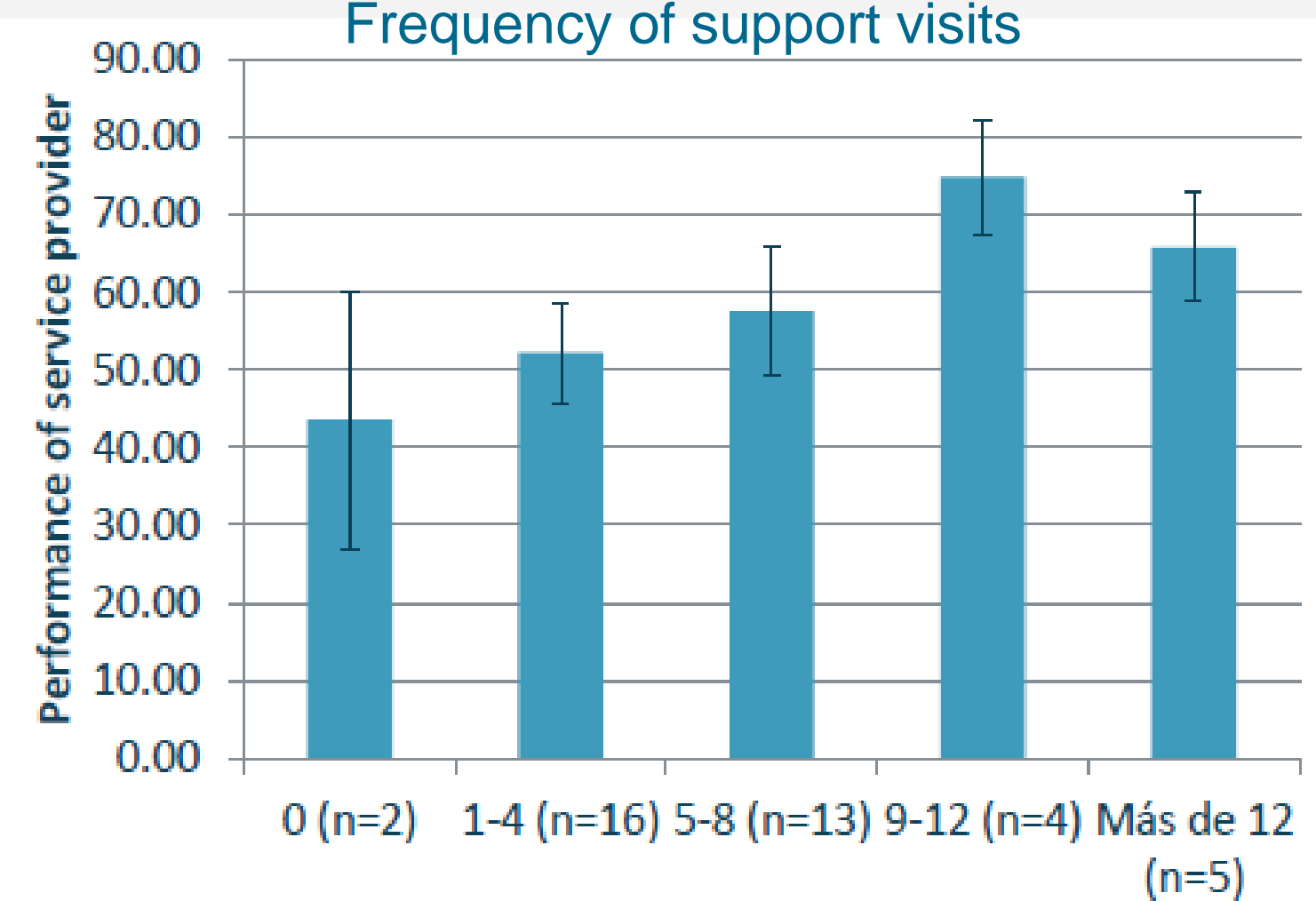


# POST CONSTRUCTION SUPPORT COSTS

Comparison of % users receiving a basic service level with maintenance expenditure per user

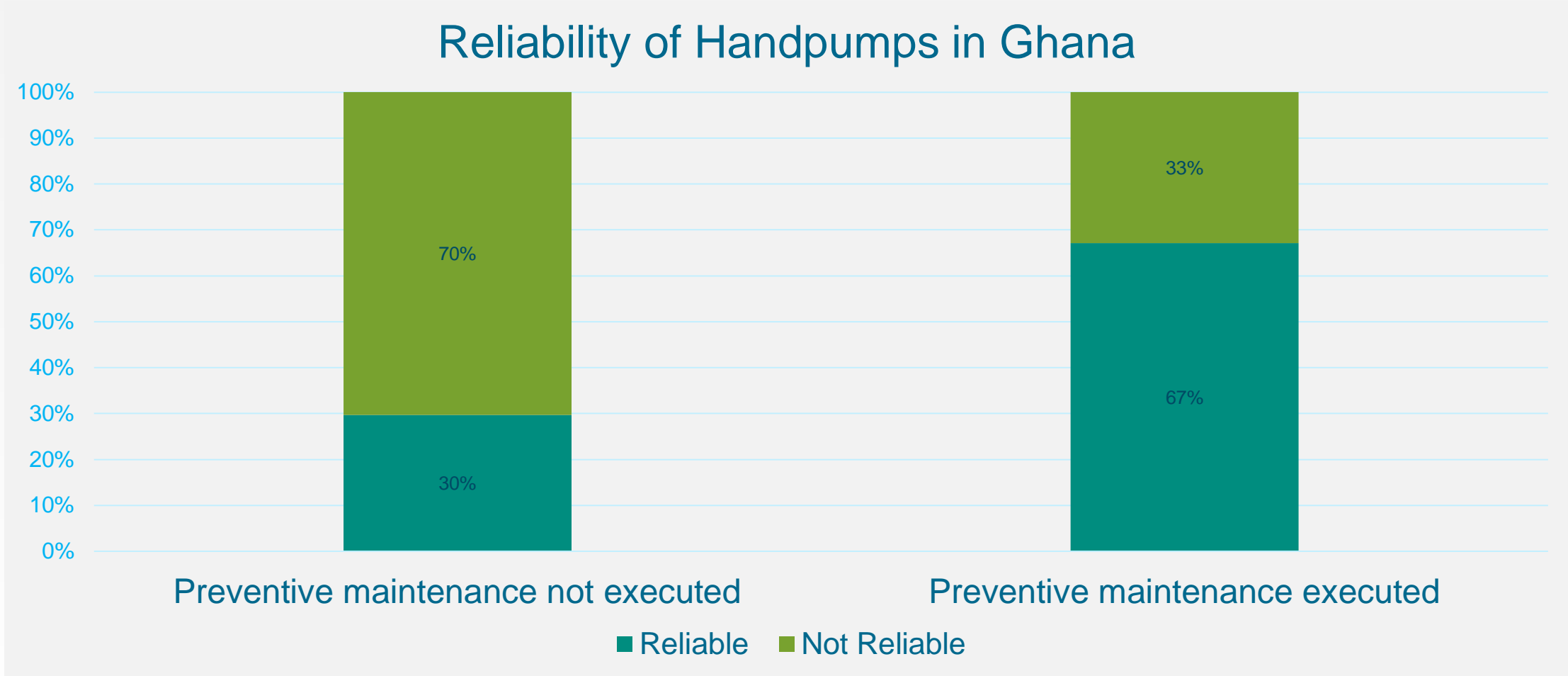


# POST CONSTRUCTION SUPPORT KPIS



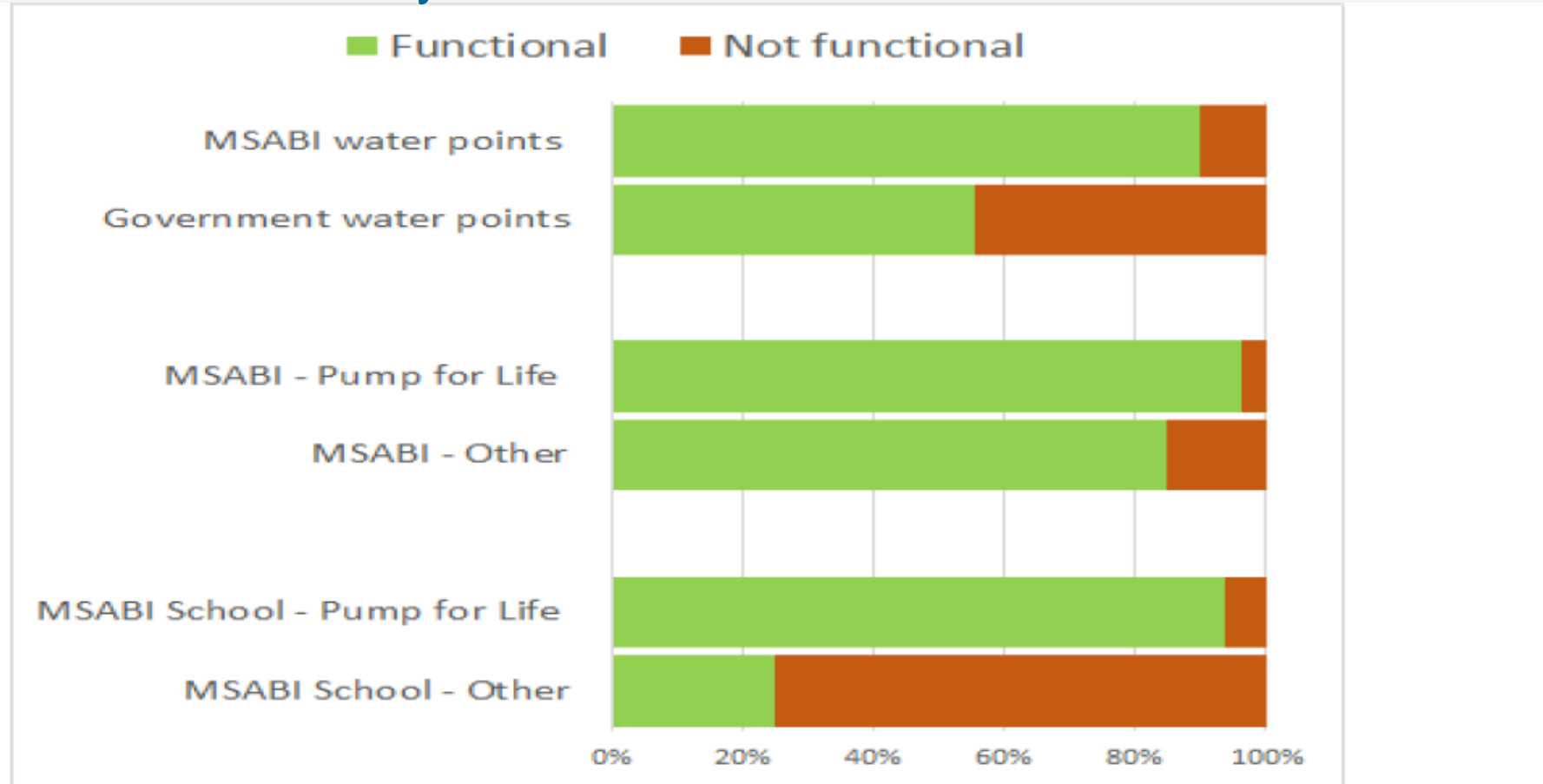
# POST CONSTRUCTION SUPPORT KPIS

## Reliability of Handpumps in Ghana



# POST CONSTRUCTION SUPPORT KPIS

## Functionality of Water Points in Tanzania



Source: Holbro et al 2015



FOR MORE  
INFORMATION

Susan Davis

[sdavis@improveinternational.org](mailto:sdavis@improveinternational.org)

[www.improveinternational.org](http://www.improveinternational.org)



**IMPROVE**  
INTERNATIONAL

# LET'S CHANGE THE WAY WE CHANGE THE WORLD.

**To reach everyone with water and sanitation,** let's work with governments and each other to ensure affordable, high-quality services that last for generations.

## LET'S INVEST IN PEOPLE, NOT JUST HARDWARE.

**Let's invest in systemic change, not just projects.** Let's spend less time justifying why people need safe water and good toilets and more time figuring out how to help them get and keep those services.